

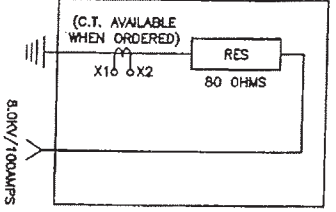
**FOR APPROVAL**

SIGNATURE \_\_\_\_\_

TITLE \_\_\_\_\_

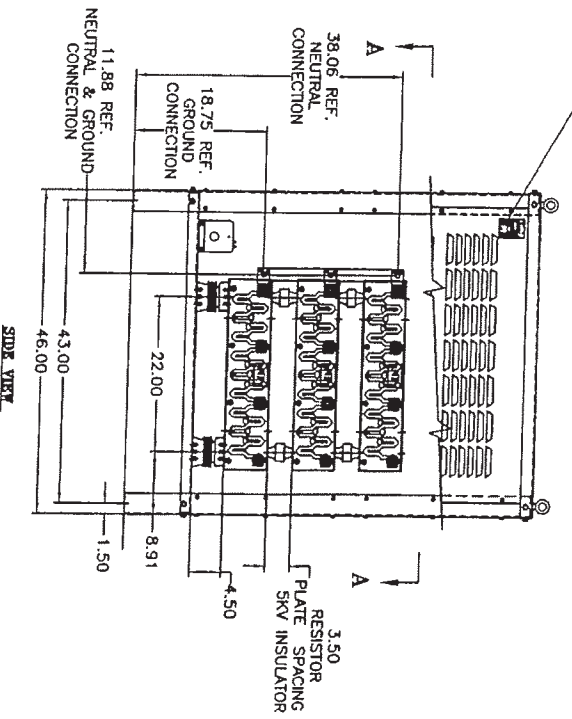
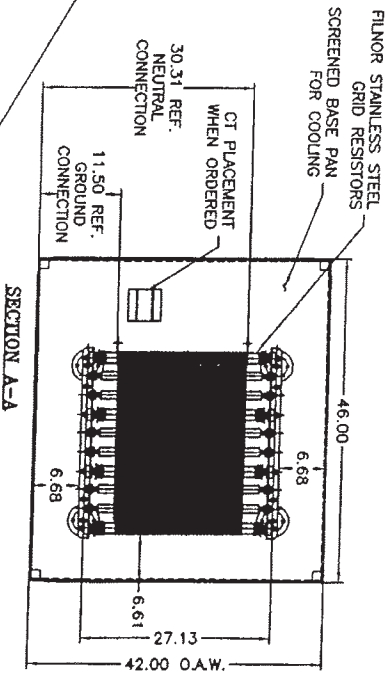
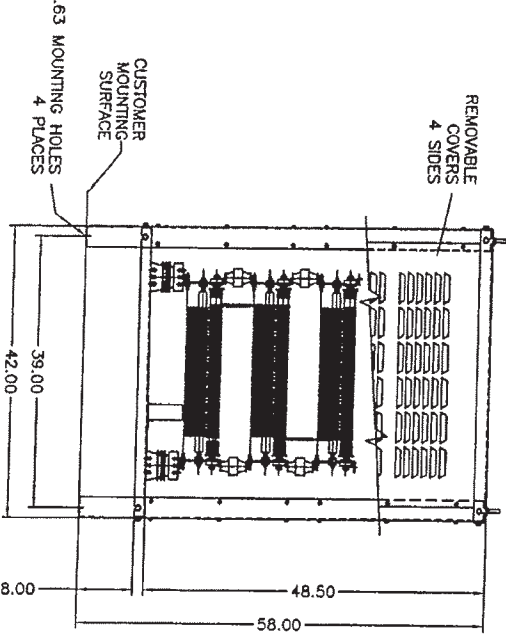
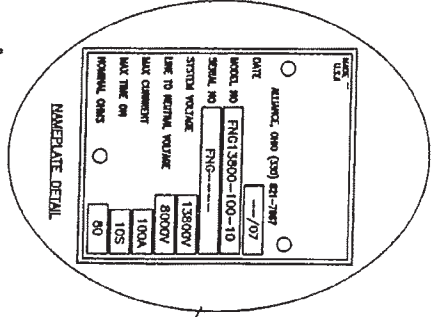
DATE \_\_\_\_\_

**ELEMENTARY SCHEMATIC**



**N.G.R. SPECIFICATIONS**

- VOLTAGE RATING:
  - 13800 V SYSTEM
  - 8000 V LINE TO NEUTRAL
- CURRENT RATING:
  - 100 AMP MAX.
- MAX. TIME ON: 10 SECONDS
- UNIT RESISTANCE:
  - 80 OHM / ±10%
- CURRENT TRANSFORMER RATING:
  - NONE PROVIDED
- MAXIMUM TEMPERATURE RISE:
  - 780° C AFTER 60 SECONDS
- ENCLOSURE TYPE:
  - GENERAL PURPOSE
  - INDOOR / OUTDOOR
  - KSA 70 LIGHT GRAY FINISH
- STANDARDS:
  - IEEE 32-1980
- EST. WEIGHT:
  - 810 LBS.
- RESISTORS:
  - FLUOR STAINLESS STEEL
  - GRID TYPE
- BUSBARS:
  - NONE; INTERNAL CONNECTIONS
  - BOTTOM ENTRY AND EXIT
- DESIGNED AND TESTED TO THE FOLLOWING RATINGS:
  - 80kV AIR INSULATION TO ENCLOSURE
  - 220kV HIGH POT FOR 60 SEC.



- GENERAL NOTES:**
- FLUOR TO CONNECT RESISTORS IN SERIES
  - UNIT MOUNTING HARDWARE NOT PROVIDED.
  - MINIMUM CLEARANCES:
    - SIDES AND BACK: 12"
    - FRONT: 24" FOR TERMINAL ACCESS
  - CUSTOMER RESPONSIBLE FOR PUNCHING CONDUIT HOLES FOR ENTRY/EXIT IN ENCLOSURE.
  - CUSTOMER TO FIT TERMINALS FOR POWER CONNECTION.
  - DATA SHEET/PLATE PROVIDED ON ENCLOSURE.

REVISIONS		TOLERANCES	
NO.	DATE	BY	UNLESS OTHERWISE SPECIFIED USE THE FOLLOWING TOLERANCES:
1			FRACTIONAL ±1/32
2			DECIMAL ±.015
3			XXX ±.005
4			CRITICAL DIMENSION DENOTED BY
5			
6			
7			

MODEL NO	FNG13800-100-10
SYSTEM VOLTAGE	13800V
LINE TO NEUTRAL VOLTAGE	8000V
MAX CURRENT	100A
MAX TIME ON	10S
NORMAL OHMS	80

DATE	07/07
MODEL NO	FNG13800-100-10
SERIAL NO	FNG
SYSTEM VOLTAGE	13800V
LINE TO NEUTRAL VOLTAGE	8000V
MAX CURRENT	100A
MAX TIME ON	10S
NORMAL OHMS	80

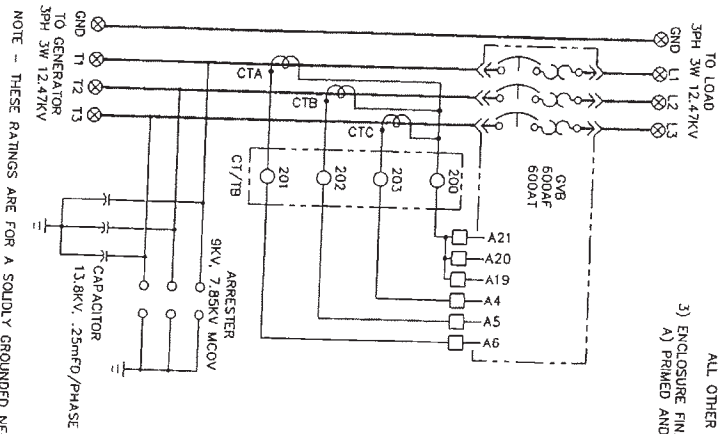
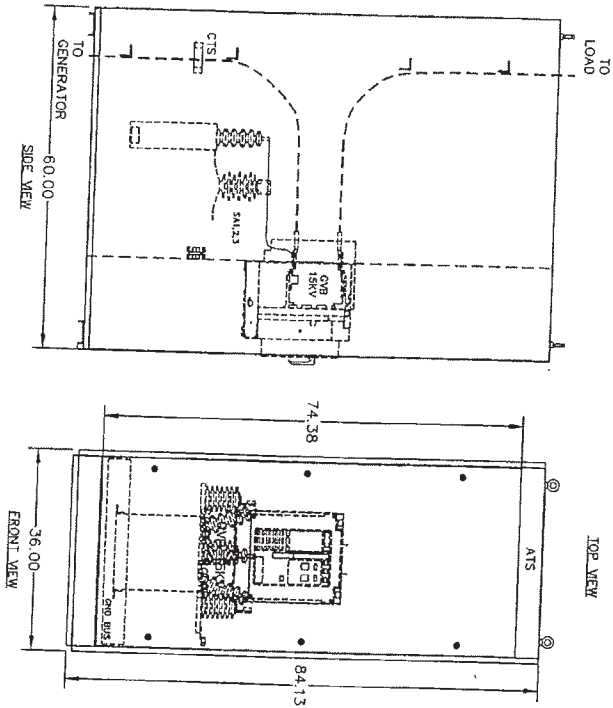
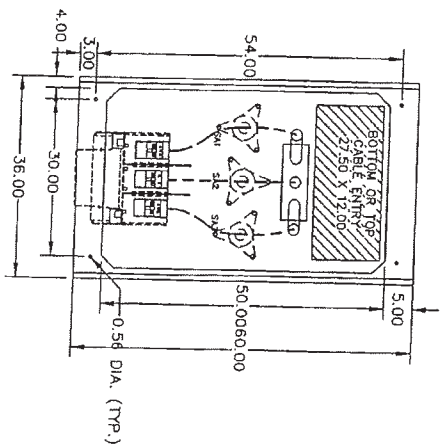
  

DATE	11/23/05
BY	SKM
CHKD BY	JIN
APPROVED BY	
SCALE	NONE
REVISION NO.	14
REVISION	FNG13800 STD
REVISION	FNG13800-100-10

Parent Item Description 15KV, 600A GEN. VACUUM BREAKER  
 L070647 075-0647

LEVEL	SEQ	LAKE SHORE	DESCRIPTION	ENGINEERING	MANUFACTURER	QTY	UOM	LIST	EFFECTIVE
NUM	NUM	PART NUM		DRAWING NUMBER				PRICE	DATES
									FROM TO
1	C8TB	21CHCV83360228	VCP-TR VACUUM BREAKER 15KV	150VCP-TR16-600A	CUTLER HAMMER	1.0	EA	0.0	
1	BA	21CHCV83361211	VCP-T SCREW TYPE TERM BLK KIT	67A3151602	CUTLER-HAMMER	1.0	EA	0.0	
1	TRIP	21CHCV83361231	TRIP INDICATOR SWITCH	69C3194601	CUTLER-HAMMER	1.0	EA	0.0	
1	TRIP	21CHCV83361242	DIGITRIP RMS TRIP UNIT 520V	67A3154601	CUTLER-HAMMER	1.0	EA	0.0	
1	LUG	47BURUG1551200	DIGITRIP CURRENT SENSOR 600A	5720893606	CUTLER-HAMMER	1.0	EA	0.0	
1	CLAMP	47BURUG1554312	LUG - 1 HOLE 1/0-4/0	69C3011406	CUTLER-HAMMER	1.0	EA	0.0	
1	CABLE	47MLNCA0638375	GROUND CLAMP 2-HOLE #2-2/0	KA-28	BURNDY	6.0	EA	0.0	
1	CABLE	47PEPCA0629355	#2 BARE COPPER CABLE 'GND'	GC2626CT	BURNDY	9.0	EA	0.0	
1	T/B	50GECS83300107	CABLE #4 15KV UNSHIELDED	#2 BARE COPPER 'GND'	MILNER	14.0	EA	0.0	
1	CAP	56GECS3170103	T/B 4 PT. W/SHORTING BAR	EB278045C	MISC	9.0	FT	0.0	
1	N/P	58ETCET7679022	CAPACITOR 13.8KV .25 MIC 3PH	18L0012WH	GENERAL ELECTRIC	1.0	EA	39.0	
1	LBL	58LEPRR7679024	SURGE ARRESTOR 12.47 KVLL 9KV	9L11XP8009S	GENERAL ELECTRIC	1.0	EA	0.0	
1	LBL	58PANPR3266501	N/P "LAKE SHORE" 3X6	7679022	ETCHED METALS	3.0	EA	677.0	
1	COPPER	61C85C00225200	LBL - SWITCHBOARD (OBSOLETE!)	PVS07108364	LAKE SHORE ELECTRIC	1.0	EA	3.9	
1	COPPER	61C85C00225300	1/4 X 2 CU BAR SILVERFLASH		PANDUIT	4.0	EA	0.0	
1	E/BOLT	63HOLEB1648012	1/4 X 3 CU BAR SILVERFLASH		COPPER & BRASS SALES	6.0	FT	17.5	
			EYEBOLT 1/2"		HOLO-KRME	3.0	FT	22.5	
						4.0	EA	0.0	

End of report



NOTE - THESE RATINGS ARE FOR A SOLIDLY GROUNDED NEUTRAL SYSTEM

- 3) ENCLOSURE FINISH:  
A) PRIMED AND PAINTED ANSI-61 LIGHT GRAY
- 2) ENCLOSURE CONSTRUCTION:  
A) NEMA 1, FREE-STANDING, 14 GA. SHEET  
B) (1) REMOVABLE FRONT PANEL  
C) (1) REMOVABLE REAR PANEL  
D) INDIVIDUAL SECTIONS CAN NOT BE SEPARATED.  
E) MOUNTING DIMENSIONS ARE ±1/32".  
F) ALL OTHER DIMENSIONS ARE APPROXIMATE.
- 1) SPECIFICATIONS:  
A) GENERATOR DISC. TO UTILIZE CUTLER HAMMER VCP-TR RIMED VACUUM CIRCUIT BREAKERS.  
B) 15KV SWITCH GEARS IS FOR USE WITH 3PHASE 3MRE 80HZ.  
C) XXXXXV GENERATOR SET AT 12.47KV

REV	DATE	BY	CHKD	DESCRIPTION
01	06/07	...	...	15KV GENERATOR DISCONNECT OUTLINE

75-0647-02