

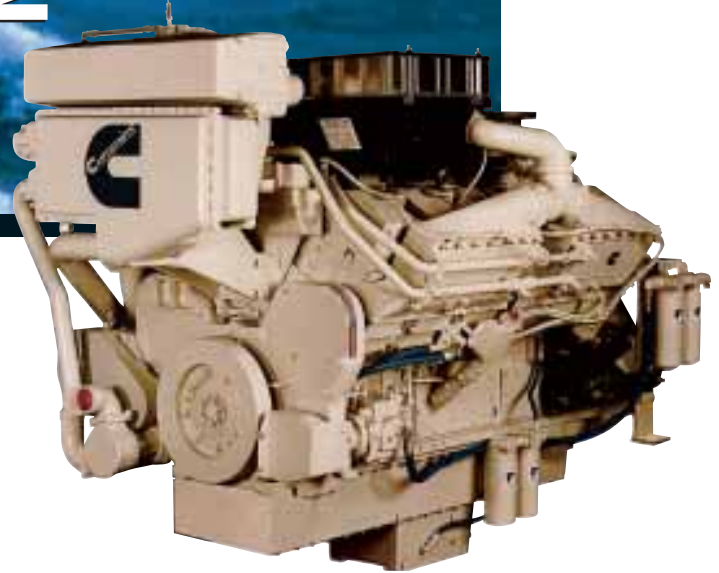
RUN HARD. DREAM BIG.™



# KTA38-M2

## MARINE

783 - 1119 KW  
1050 - 1500 HP



### ENGINE SPECIFICATIONS

Configuration	V-12 Cylinder, 4-Stroke Diesel
Bore & Stroke	159 mm x 159 mm (6.25 in x 6.25 in)
Displacement	38 L (2300 in <sup>3</sup> )
Compression Ratio	13.9:1
Rotation	Counterclockwise facing flywheel
Oil Pan Capacity	114 L (30 gallons) Standard Capacity 186 L (49 gallons) High Capacity

### POWER RATINGS

Rating	Continuous Duty*		Heavy Duty*			Medium Duty*	Intermittent Duty*
Rated RPM	1600	1800	1800	1900	1950	1950	2050/969
kW (BHP)	783 (1050)	895 (1200)	969 (1300)	1007 (1350)	1007 (1350)	1044 (1400)	1119 (1500)
Max Torque N-m (ft-lb) RPM	5002 (3689) 1300	5210 (3843) 1400	5383 (3971) 1400	5329 (3931) 1500	5177 (3814) 1500	5112 (3771) 1500	5469 (4034) 1500

\*Ratings are IMO emissions compliant.

### STANDARD FEATURES

#### Engine Design

Four cycle design for quiet and fuel-efficient operation. Low profile for ease of installation and service. Replaceable wet cylinder liners for longer life and lower rebuild cost. Gallery cooled pistons for maximum durability.

#### Cooling System

Keel cooled or engine mounted heat exchanger for reduced installation cost and complexity. Spin-on Fleetguard® water treatment filter.

#### Air System

Twin Holset turbochargers optimized for marine use. Marine grade air filters with air inlet restriction included. Dry exhaust manifold with water shielding for reduced fuel consumption and improved emissions.

#### Fuel System

Dependable Cummins PT® fuel system can be operated mechanically or with CENTRY® electronics for enhanced engine fueling. Step Timing Control (STC) allows for smooth engine acceleration under load. Spin-on Fleetguard filters or optional duplex Fleetguard fuel filters.

#### Lubrication System

Marine-grade oil pan (114 L [30 gal]) or high capacity (185 L [49 gal]) available. Fleetguard spin-on filter cartridge for simplified service.

#### Electrical System

24-volt standard electrical system with 12-volt available. Standard alarm/switches for low oil and high water temperature for safe operation. Marine grade wiring harness.

#### IMO Emissions Certified

Certificates of compliance available from the U.S. EPA and Lloyd's Register of Shipping.

### AVAILABLE ACCESSORIES

#### Front Power Take-Off

**Available Accessory Drives** belt or gear driven

**Centinel Oil Management System** reduces oil and filter disposal costs

**Eliminator System** replaces all lube oil cartridges

**Prelub® Starter** protects engine against damage from dry starts and extends engine life

**Classification Society Approvals:** consult your local Cummins professional for a complete listing of current marine agency approvals for this engine

# KTA38-M2

M A R I N E

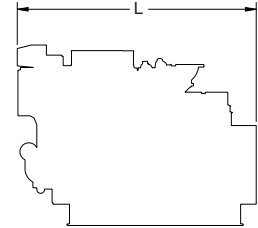
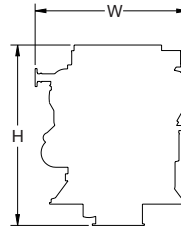
783-1119 KW

1050-1500 HP



## ENGINE DIMENSIONS

Length		Width		Weight		KC	Height	
mm	in	mm	in	kg	lb		mm	in
2003	79	1465.6	57.7	4222	9300		2055.5	80.92
						HX	1803.2	70.99



## PERFORMANCE DATA

Rating	Continuous Duty 1050 bhp*				Continuous Duty 1200 bhp*				Heavy Duty 1300 bhp*				Heavy Duty 1350 bhp @ 1950 rpm*			
rpm	1600	1400	1200	1000	1800	1600	1400	1200	1800	1600	1400	1200	1950	1700	1500	1300
kW	783	524	330	191	895	629	421	266	969	706	492	324	1007	695	496	337
g/kW-hr	216	225	242	242	210	219	233	249	207	202	200	197	205	207	213	217
L/hr	201.4	140.8	95.2	55.1	224.4	164.4	117.1	78.9	239.2	170.2	117.1	76.1	246.3	171.4	126.2	87.3
bhp	1050	703	443	256	1200	843	565	356	1300	946	660	435	1350	932	665	452
lb/hp-hr	.355	.370	.397	.399	.346	.360	.383	.411	.340	.333	.328	.323	.338	.340	.351	.358
gal/hr	53.2	37.2	25.1	14.6	59.3	43.4	30.9	20.9	63.2	45	30.9	20.1	65.1	45.3	33.3	23.1

Rating	Heavy Duty 1350 bhp @ 1900 rpm*				Medium Duty 1400 bhp*				Intermittent Duty 1500 bhp*			
rpm	1900	1700	1500	1200	1950	1700	1500	1200	2050	1800	1500	1200
kW	1007	746	532	291	1044	721	514	281	1119	788	481	263
g/kW-hr	210	203	200	212	206	209	214	213	209	200	197	215
L/hr	251.5	180.5	126.6	73.6	256.6	179.2	131.2	71.5	279	188.3	112.8	67.4
bhp	1350	1000	713	390	1400	967	689	377	1500	1056	645	353
lb/hp-hr	.344	.344	.329	.348	.339	.342	.353	.351	.344	.330	.323	.353
gal/hr	66.4	47.7	33.5	19.4	67.8	47.3	34.7	18.9	73.7	49.8	29.8	17.8

\*Ratings are IMO emissions compliant.

Above data represents performance along a 3.0 fixed pitch propeller curve. Fuel consumption has a tolerance of + 5% and is based on fuel of 35° API gravity at 16°C (60°F) having an LHV of 42,780 KJ/KG (18,390 BTU/lb) when used at 29°C (85°F) and weighing 838.9 g/liter (7.001 lb/U.S. gal) with LTA. Observed power output is certified within ± 3% of rated power. Cummins has always been a pioneer in product improvement. Thus specifications may change without notice. Consult your local Cummins professional for further information.

### Rating Definitions

Ratings are based on ISO 8665 conditions of 100kPa(29.612 in Hg) and 25 °C (77 °F) and 30% relative humidity. Propeller shaft power represents the net power available after typical gear losses and is 97% of rated power. Power rated in accordance with IMCI procedures.

### Continuous Duty

Intended for continuous use in applications requiring uninterrupted service at full power. This rating is an ISO 3046 standard power rating.

### Heavy Duty

Intended for continuous use in variable load applications where full power is limited to eight hours out of every ten hours of operation. Also, reduced power operations must be at or below 200 rpm of the maximum rated rpm. This rating is an ISO 3046 fuel stop power rating and is for applications that operate less than 5,000 hours per year.

### Medium Continuous Duty

Intended for continuous use in variable load applications where full power is limited to six hours out of every twelve hours of operation. Also, reduced power operations must be at or below 200 rpm of the maximum rated rpm. This rating is an ISO 3046 fuel stop power rating and is for applications that operate less than 3,000 hours per year.

### Intermittent Duty

Intended for intermittent use in variable load applications where full power is limited to two hours out of every eight hours of operation. Also, reduced power operations must be at or below 200 rpm of the maximum rated rpm. This rating is an ISO 3046 fuel stop power rating and is intended for applications that operate less than 1,500 hours per year.



Cummins Marine, Division of Cummins Inc.  
4500 Leeds Avenue – Suite 301, Charleston, South Carolina 29405 U.S.A.

www.cummins.com  
E-mail: wavemaster@cummins.com

Bulletin 3885235 Printed in U.S.A. Rev. 6/01 ©2001 Cummins Inc.