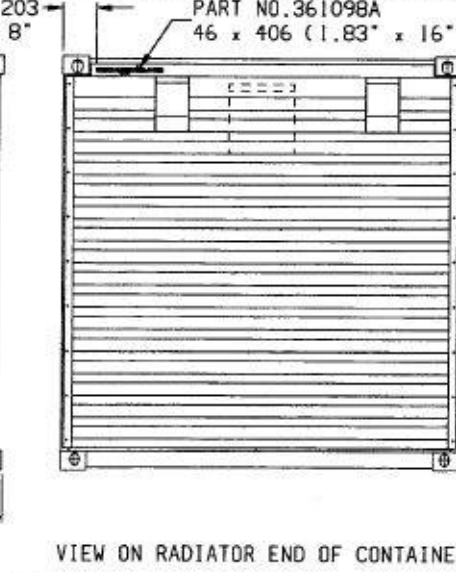
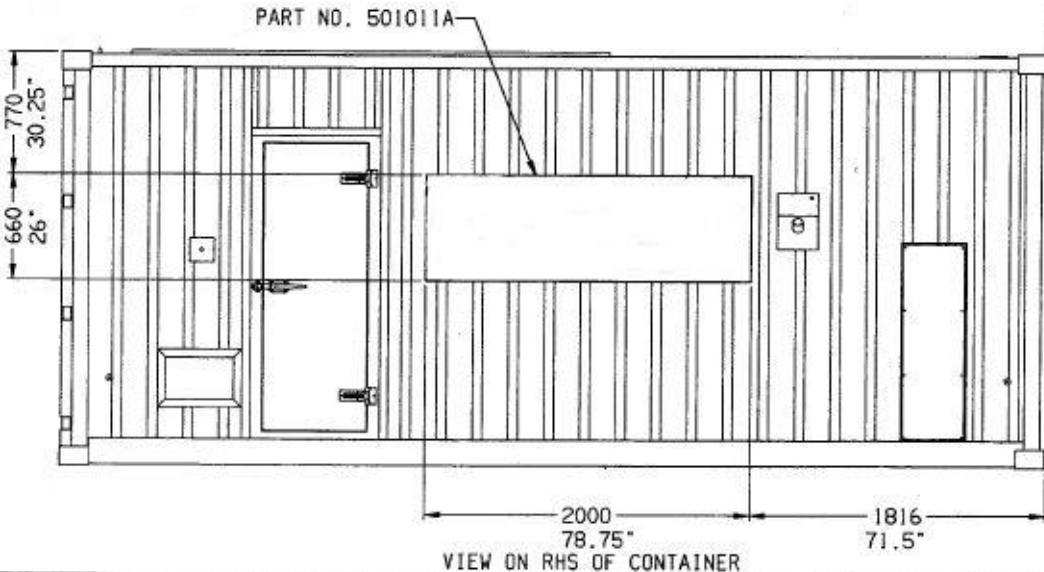


THIRD ANGLE PROJECTION

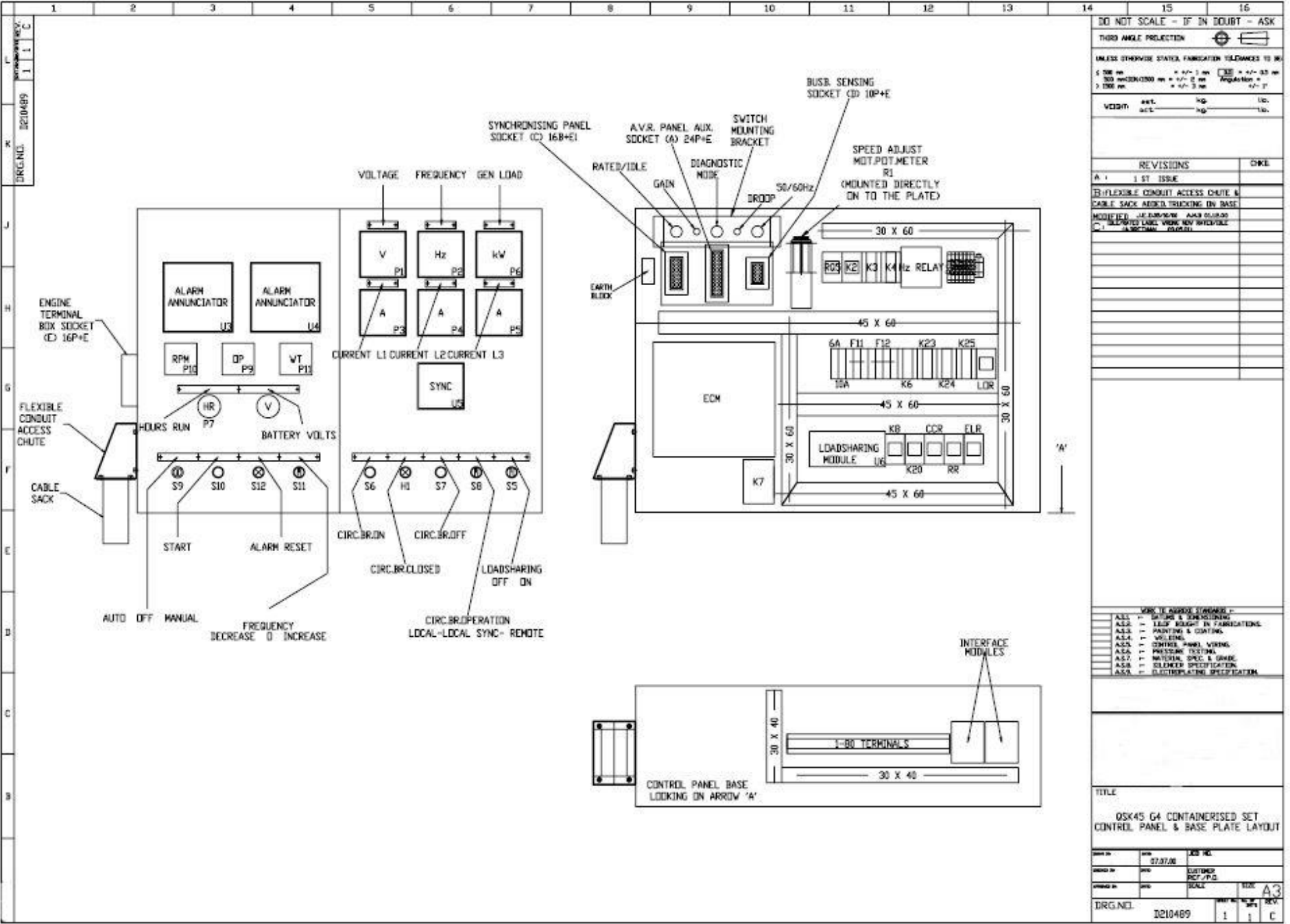
NOTE:
2000x660 LOGO RIVETTED TO CONTAINER USING 10 RIVETS ALONG TOP AND BOTTOM EDGES, AND 4 RIVETS AT EACH END AT APPROX. 200mm PITCH. (26 TOTAL)

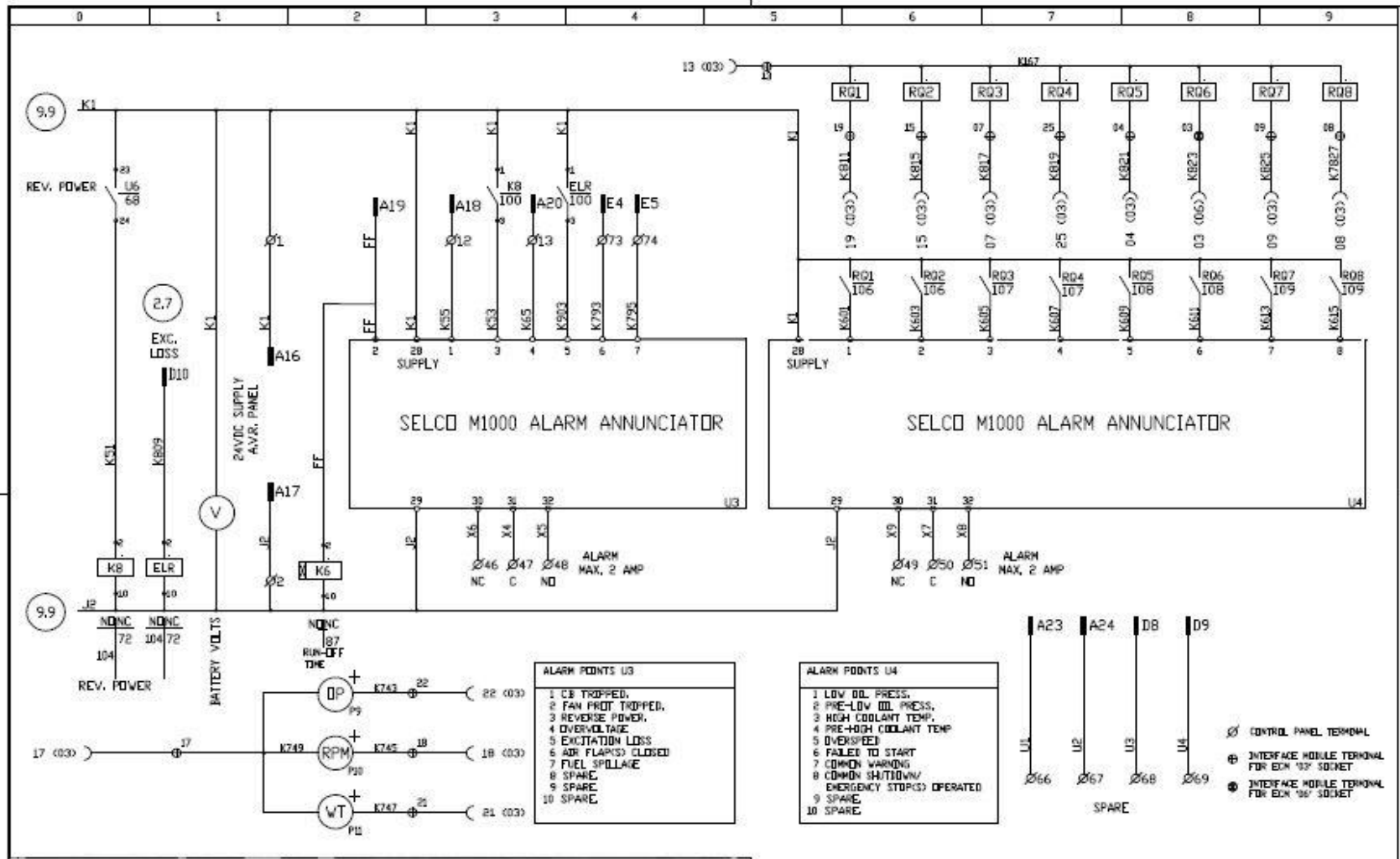
1422x305 LOGO RIVETTED TO CONTAINER USING 8 RIVETS ALONG SIDE EDGES AT APPROX 200mm PITCH. (16 TOTAL)

RIVETS TO BE POSITIONED ON THE BLACK AREAS OF THE SIGNS SO THAT THE HEADS CAN BE COLOURED TO MATCH.



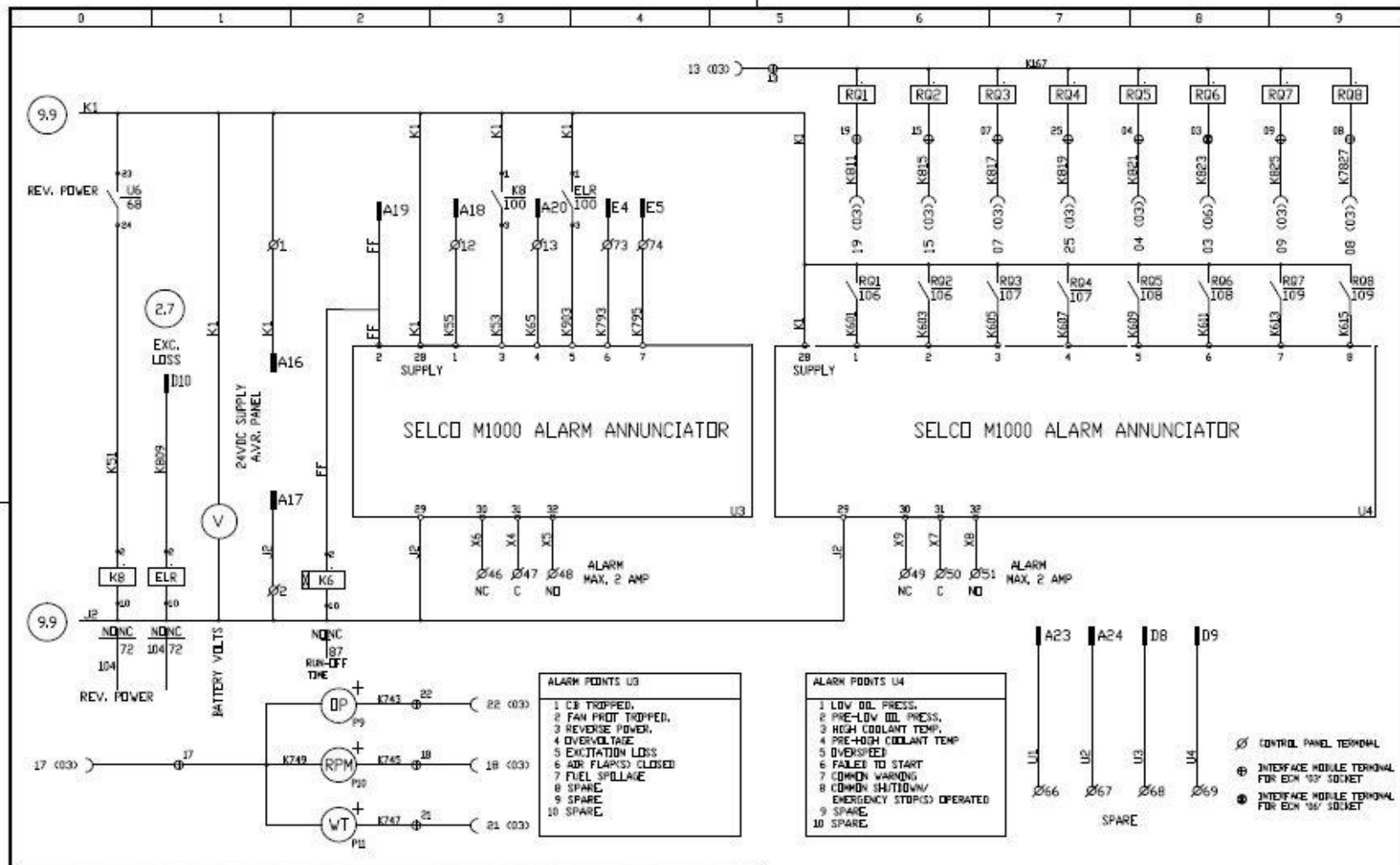
| | | | | | | | | | | | | | |
|-----------|----|-------------|------|-------|------|-------|--------|-------------------------|---------------------|------------------|-----------|--------------|------|
| REVISIONS | A1 | 1 ST. ISSUE | DNW. | DATE: | DNW. | DATE: | TITLE. | CONTAINER LIVERY LAYOUT | | DRG. No. D200090 | SHEET No. | No OF SHEETS | REV. |
| | B1 | | | | | | DNW. | A. BRETMAN | APPROV. J. A. Casny | | 1 | 1 | A |
| | C1 | | | | | | DATE: | 22.03.01 | DATE: | | 20/4/01 | | |





| REV. ECH. | DESCRIPTION | CHECKED |
|-----------|--|---------|
| D | POSITIVE SELCO SHOWN AT GAUGES (GAR 3098) (AMB 17.04.04) | |
| B | INTERFACE MODULE TERMINATIONS ADDED DC 02.09.00 | |
| C | INTERFACE MODULE TERMINATION NUMBERS (GARR 11. 09.00) | |

| SCALE | DRAWN BY | DATE | CHECKED BY | DATE | APPROVED BY | DATE |
|------------------|--|----------|------------|------|--------------------------|------|
| | KENNEDY | 19.06.00 | | | | |
| PROJECT / ID No. | DESCRIPTION QSK45-G4 ENGINE CONTROL/INDICATION | | | | DRG No. D080732 | |
| | | | | | SHEET 10 OF 11 REV. 1 A3 | |



| REV. | DESCRIPTION | CHECKED |
|------|---|---------|
| D | POSITIVE SECS SHOWN AT GAUGES (CAR 5896) (AMB 17253) | |
| B | INTERFACE MODULE TERMINATIONS ADDED DC 10/29/00 | |
| C | INTERFACE MODULE TERMINATION NUMBERS (SHAME) 1A 29/20 | |

| SCALE | DRAWN BY | DATE | CHECKED BY | DATE | APPROVED BY | DATE |
|-------------------|---------------------------------------|----------|------------|------|-------------|-----------------|
| | GKENNEDY | 19.06.00 | | | | |
| PROJECT / JOB No. | DESCRIPTION | | | | | DRG No. D080732 |
| | GSK45-G4 ENGINE CONTROL/INDICATION | | | | | SHEET 10 OF 11 |